



quick.  
comfortable.  
active/passive/dry.

new:  
optimized design for best fit  
74 labeled standard positions (10-10 system)  
+86 additional intermediate positions  
use cap with chest belt or with chin strap

# g.<sup>®</sup> *GAMMAcap<sup>2</sup>*

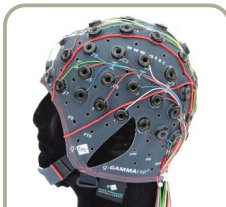
ACTIVE/PASSIVE/DRY EEG ELECTRODE CAP



# g.<sup>®</sup> GAMMAsys

## ACTIVE/PASSIVE ELECTRODE SYSTEM

- ◆ Avoid or reduce artifacts from movements and electromagnetic interference with active electrodes
- ◆ Fastest electrode montage for multi-channel recordings
- ◆ Flexible material, comfortable to wear, one size fits for most people
- ◆ Cap can be used with active, passive or dry electrodes
- ◆ No abrasive skin treatment required with active electrodes
- ◆ Electrodes remain in the cap for cleaning
- ◆ Single electrodes can be replaced easily
- ◆ 74 standard positions + 86 intermediate positions
- ◆ Active earclip reference electrode
- ◆ g.GAMMAsys works for all g.tec amplifiers, 3rd-party amplifiers are supported on request
- ◆ Different types of electrodes available
- ◆ 0 Hz - 10 kHz (DC) or 0.1 Hz - 10 kHz (AC) bandwidth
- ◆ Solutions for 1 - 64 channels



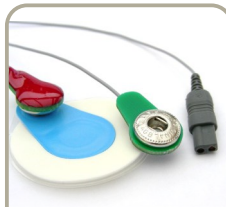
**g.GAMMAcap<sup>2</sup>**  
size M (S and L also available)  
74 standard + 86 intern. positions  
chin strap, chest belt optional



**g.GAMMAbox**  
interface/driver box for 16  
channels per unit  
extension boxes available for multi-  
channel recording



**g.GAMMAgel / g.GAMMAcream**  
special water-based clear  
conductive gel or cream for g.tec's  
electrodes  
200g doser can



**g.GAMMAclip**  
active clip connector to use with  
disposable electrodes  
with 2-pin safety plug



**g.LADYbird active**  
active biosignal electrode Ag/AgCl  
can be used for DC recordings  
suitable for long-term sessions



**g.BUTTERfly active**  
active biosignal electrode Au (gold)  
easy handling, robust and  
cost-efficient



**g.GAMMAearclip active**  
active earclip reference electrode  
available with Au and Ag/AgCl  
surface  
with 2-pin safety plug



**g.LADYbird passive**  
passive Ag/AgCl ring electrode for  
g.GAMMAcap  
with 1.5 mm safety plug